



National Alliance on Mental Illness



2018 ANNUAL REPORT



About NAMI

The National Alliance on Mental Illness is the nation's largest grassroots organization devoted to building better lives for millions affected by mental health conditions.

NAMI began in 1979, when two mothers from Madison, Wisconsin reached out to others around the country who shared their outrage at the stigma, discrimination and inadequate care their loved ones faced. When these families joined forces, NAMI became a powerful voice for change.

Today's NAMI is hundreds of thousands strong—a dynamic alliance working at the federal, state and local level to transform the way mental illness is understood and treated. We envision a world where all people affected by mental illness live healthy, fulfilling lives supported by a community that cares.

The hope we found in 1979 is the hope we continue to give.



**A personal message
from NAMI CEO**

Mary Giliberti, J.D.

NAMI came together at a time when people struggling with mental illness felt so shunned and marginalized that many simply hid themselves away.

They and their families were profoundly affected by the widespread view that mental illness was a character flaw, not a brain-based health condition deserving the same resources and attention as any other health issue.

Today, stigma and discrimination still exist—but as millions of us raise our voices in homes, schools, community centers, statehouses and the halls of Congress, harmful misconceptions are beginning to fall.

Encouraged by NAMI and the many courageous partners and ambassadors who are helping us lead the fight, the public is demanding answers to questions that have troubled us from the very beginning:

Why do we often treat people with mental health conditions as if they were criminals?

Why do we draw a line between physical health and mental health, even though we know the mind and body are intimately connected?

Why are there too few mental health providers in nearly every community—and far too many barriers to affordable, effective care?

When it comes to shaping real progress for millions with mental illness and their families, these questions are just the start. But in 2018 we saw clear signs that new answers are on the horizon. We are proud to share this annual report with you, along with our heartfelt thanks for the support you so generously give.

Mary

NAMI Strategic Plan

How We Work

BUILDING A MOVEMENT

Powerful alliances
Authentic voices
Collaboration for change

LEVERAGING TECHNOLOGY

Streamlined operations
Wider outreach
More responsive support

FOCUSING ON YOUTH

Early intervention
Proven care models
Family, school and community

ADVOCACY

Reshaping laws and policies
Fighting discrimination
Funding research and innovation

STRENGTHENING THE ORGANIZATION

Raising funds
Developing people
Organizing for impact

Igniting the Conversation on Mental Health

NAMI is the grassroots voice for individuals with mental illness and their families. We achieve impact through powerful campaigns and partnerships that fight stigma and champion change.

32

BRAND PARTNERS

Many of the world's best-known companies aligned with NAMI, taking active steps to **reduce workplace stigma, widen awareness and support** our vital work.

527,000

SOCIAL MEDIA FOLLOWERS

NAMI's social media following grew by **more than 25%** through national campaigns such as #CureStigma, which drew **more than 10 million visits** across multiple channels. Stigma-fighting public service announcements aired on more than 600 TV stations nationwide.

POWERFUL PARTNERS

Retail business group Hudson's Bay Company, including divisions Saks Fifth Avenue, Lord & Taylor and Saks Off 5th, named NAMI a **"best in class" mental health charity**.

GREEN SNEAKERS FOR MENTAL HEALTH

During Mental Health Month, Kenneth Cole offered the **first branded merchandise supporting NAMI**.



THE AUTHORITATIVE VOICE ON MENTAL ILLNESS

NAMI senior leaders fielded hundreds of interview requests as media coverage of mental health soared. Speaking at a June event hosted by the Washington Post, NAMI CEO Mary Giliberti described serious mental illness as "the greatest health disparity no one is talking about." During Suicide Prevention Month in September, **more than 4,500 published articles mentioned NAMI**.



WATCH Mary Giliberti on Washington Post Live.

"Care is care. There can be no justification for treating mental illness with less urgency and fewer resources than we give to any other health problem."

NAMI CEO MARY GILIBERTI, J.D.

34

AMBASSADORS AND INFLUENCERS

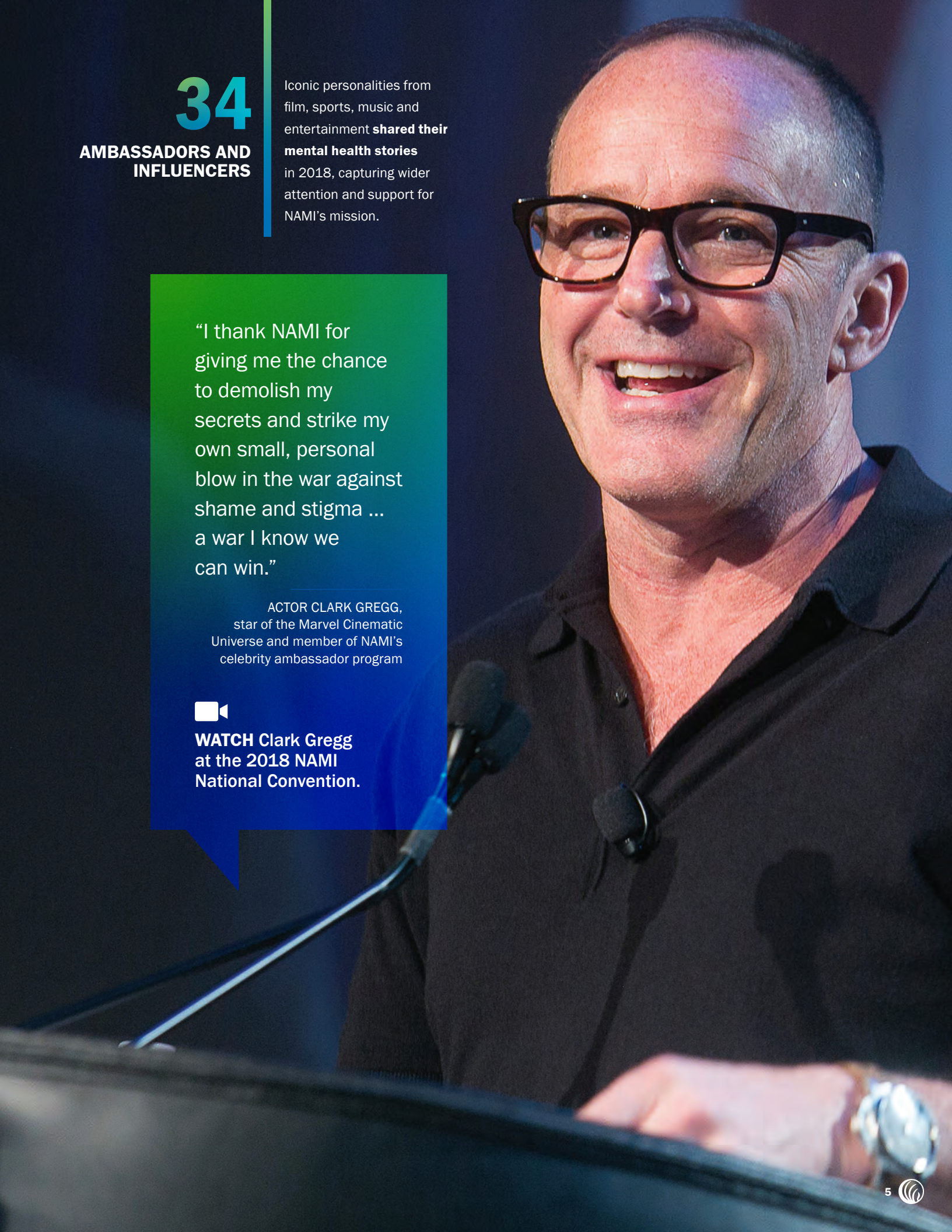
Iconic personalities from film, sports, music and entertainment **shared their mental health stories** in 2018, capturing wider attention and support for NAMI's mission.

“I thank NAMI for giving me the chance to demolish my secrets and strike my own small, personal blow in the war against shame and stigma ... a war I know we can win.”

ACTOR CLARK GREGG, star of the Marvel Cinematic Universe and member of NAMI's celebrity ambassador program



WATCH Clark Gregg at the 2018 NAMI National Convention.



Reaching Out to Everyone Affected by Mental Illness

Next door and across the nation, NAMI provides free education and support for youth, adults and families. We are determined that no one with mental illness will walk alone.

7M
WEB VISITORS

In 2018, NAMI's website had the **greatest share of voice among mental health websites**. More than half of those who visit our website are 18 to 34 years old, a strong sign that our focus on youth and early intervention is succeeding.

31,000
CALLS TO OUR NATIONAL HELPLINE

Volunteers in Washington, D.C. used powerful new software to link callers with mental health resources near their homes. **Local NAMI Affiliates answered thousands more calls**, providing the compassionate support that individuals and families need.

375,000+
FIND EDUCATION AND SUPPORT

NAMI programs and support groups served a growing audience, delivering information and hope in clear, engaging, culturally relevant language. **More than 12,000 volunteers with lived experience of mental illness reached people in their communities** with evidence-based education and personal support.

A WARM WELCOME

An all-new, 4-hour seminar known as **NAMI Family & Friends launched in summer 2018**, offering people an even easier way to connect with our mission and resources. **More than 150 local sessions were hosted in just 5 months.**

ENGAGING COMMUNITIES OF COLOR

In 2018, NAMI welcomed Mocha Moms as our newest partner in serving African American families facing mental health struggles. **Mocha Moms joins longtime partners Jack & Jill of America and Alpha Kappa Alpha sorority in bringing NAMI resources to communities of color** and drawing powerful new voices to our movement.

“I’ve really learned how to cope with my triggers better, and I’m now on the path to truly loving myself.”

NAMI PEER-TO-PEER PARTICIPANT

RECOVERY WITHIN REACH

Our popular NAMI Peer-To-Peer course re-launched in 2018 with an even stronger focus on **helping adults with mental illness build on their own inner resilience.**

This free, confidential, 8-session course is led by peers with mental health conditions who offer perspectives on goal setting, accountability, relationships, communication and much more.

“I was a peer counselor in jail before I became a certified peer counselor on the outside. Today I know that recovery is possible *for all of us*, no matter how far we’ve fallen.”

NAMI ADVOCATE LLOYD HALE, sharing his journey as part of our criminal justice video series



WATCH Lloyd Hale in
“Is Recovery Possible?”

NAMI
Ending The
Silence

CHANGING THE STORY for teens and young adults

42%

INCREASE
IN PROGRAM
REACH

300

NEW YOUTH
PRESENTERS
TRAINED

175,000

PARTICIPANTS
REACHED

NAMI's evidence-based program on teen mental health expanded rapidly in 2018, reaching 42% more students, families and school staff nationwide. A major gift made in 2017 by former First Lady Tipper Gore helped us train nearly 300 new youth presenters, who in turn reached more than 175,000 participants.

Echoing the experiences of their peers around the country, here's what presenters from NAMI North Texas say about sharing their mental health stories in settings from middle-school auditoriums to high-school health classes to college dorms.



“Students have so many questions and fears, sometimes even secret struggles of their own. I feel a kind of relief in the room when I tell them, ‘I get it. I was you.’”

BROOKE ANDERSON



“My family taught me to hide my problems. I felt guilt and shame when mental health symptoms disrupted my college career. But I found a way forward ... and now I can encourage young people to ask for help the same way I did.”

EBONIE FREEMAN



“As a former teacher, I love working with school staff. I reassure them they don’t have to be mental health experts to provide real, tangible support for kids and parents.”

HANNAH BOTT

Boldly Advocating for Change

NAMI advocates bring the power of lived experience to the halls of Congress and state capitols nationwide. We fight every day to promote innovation, improve care and support recovery for people with mental illness.

INCREASING FUNDING FOR MENTAL HEALTH PRIORITIES

NAMI advocates **successfully called for increased federal funding for mental health research, services and supports**. Substantial gains in 2018 will fuel new brain research, more supported housing and mental health block grant programs, and improved mental health care for military veterans.

FIGHTING ROLLBACKS ON MENTAL HEALTH PARITY

In May, NAMI published *Mental Health Parity at Risk*, a report exposing how health insurance plans routinely discriminated against people with mental illness before the Affordable Care Act enacted patient protections. In September, **we joined 6 other organizations in filing a federal lawsuit to oppose new regulations that would weaken protections** and take us back to a time when people with mental illness were routinely denied coverage, charged more, or forced to accept unfair limits on mental health care.



READ the NAMI *Mental Health Parity at Risk* report.

ENDING BARRIERS TO INPATIENT CARE

NAMI fought for modification of the Medicaid Institutions for Mental Disease (IMD) exclusion, an outdated federal rule that created roadblocks to care for adults with serious mental illness. Now, all states can request a waiver to the exclusion, allowing Medicaid billing for inpatient care in facilities with 16 or more beds.

265

**FEP PROGRAMS
NATIONWIDE**

PROGRESS FOR EARLY INTERVENTION

We pressed for the expansion of First Episode Psychosis (FEP) programs, which provide coordinated, evidence-based care for young adults facing an early episode of psychosis. **There are now 265 programs nationwide—up from only 12 in 2008.**

“Limited-benefit plans have been described as nothing more than a spare tire, providing almost no coverage for mental health. These plans are totally inadequate for the journey our loved ones have ahead of them.”

NAMI CEO MARY GILIBERTI, J.D.





1,000+
**ADVOCATES
TRAINED**

BUILDING OUR ADVOCACY BASE

Through our NAMI Smarts for Advocacy training program, **we helped more than 1,000 new advocates** gain the confidence and skill to share their lived experience with policymakers.

#
VOTE4MENTALHEALTH
**REACHES
THOUSANDS**

NAMI launched a new, non-partisan website to educate all voters on mental health issues, helping them see the impact that elected officials have on mental health services in their communities. **Some 263,000 unique visitors** visited the site to learn how to make mental health a top priority during the elections.



VISIT #VoteForMentalHealth

Building on Four Decades of Strength

NAMI leads the mental health movement through an extraordinary network of people who strive for excellence every day. We embrace new tools and technologies to improve the efficiency and quality of everything we do.

NEARLY
600
AFFILIATES
STRONG

NAMI Affiliates across the country met new standards of excellence through our reaffiliation process, **building a more powerful network to serve millions with mental illness.**

75,000+
WALKED TO RAISE
FUNDS AND
AWARENESS FOR
MENTAL HEALTH

NAMIWalks saw record participation in 2018, with 88 events bringing in **\$12 million** from **100,000+ supporters.**

HARNESSING BIG DATA

NAMI partnered with **Salesforce.com**, the world's leading provider of customer relationship management software, to create a CRM system for our unique needs. The new system will help us improve community-based services and learn more about our constituents.

FACEBOOK FUNDRAISING SOARS

In our first coordinated fundraising efforts via Facebook, NAMI garnered **\$735,000 in new support**—establishing a base for future success.



THE YEAR OF LISTENING

Throughout 2018, NAMI hosted surveys, listening sessions and focus groups with staff and volunteers to lay the foundation for a new strategic plan that will launch in 2020. **More than 50,000 survey responses** and **50 live and virtual focus groups** sparked a nationwide conversation on NAMI's future.

NAMI Volunteer Leadership Spotlight



Photo: Penumbra Photos, Inc.

“When I stood in front of that crowd at the lakefront, hearing the cheers and seeing all the support coming from our community ... it was my most powerful NAMI moment ever.”

DAVE MANCINA

DAVE MANCINA

NAMI St. Tammany, Mandeville, La.

In Dave's early days with NAMI, his cell phone served as the local help line. He's played virtually every role a volunteer can fill, from support group leader and NAMI Family-To-Family teacher to Affiliate Board President. **Over the past 20 years he's never stopped asking: "How can we reach more people?"**

Expanding services means finding more resources—so in 2017, NAMI St. Tammany launched a new NAMIWalks event. “We'd raised funds at comedy nights, golf tournaments and art gallery events, but this took us to a higher level,” Dave explains. **In their first year, 600 local walkers raised nearly \$97,000** – almost four times the amount of any previous fundraising event. **In 2018 the total jumped to almost \$114,000.**

NAMI Leadership



NAMI Board of Directors, seated, left to right:
Shirley Holloway (2nd Vice President), Lacey Berumen
(1st Vice President), Adrienne Kennedy (President),
Dave Stafford (Secretary). Standing, left to right:
Jim Hayes, Joyce Campbell, Micah Pearson, Stacey Owens,
Charma Dudley, Steve Pitman, Carrie Roach, Jackie Martinez,
Vanessa Fernandes, Amanda Lipp.
Not pictured: Barbara Ricci, Carlos Larrauri.

Executive Committee

Adrienne Kennedy, M.A., 2020

PRESIDENT

West Lake Hills, Texas

Lacey Berumen, Ph.D., M.N.M., C.A.C. III, 2019

FIRST VICE PRESIDENT

Denver

Shirley J. Holloway, Ph.D., 2019

SECOND VICE PRESIDENT

Anchorage, Ala.

Barbara Ricci, 2019

TREASURER

New York City

Dave Stafford, 2021

SECRETARY

Simpsonville, S.C.

Board of Directors

Judge Joyce A. Campbell, 2021
Fairfield, Ohio

Charma D. Dudley, Ph.D., FPPR, 2019
Pittsburgh

Vanessa Fernandes, 2021
Dallas

Jim Hayes, M.D., 2020
Greer, S.C.

Carlos Larrauri, R.N., B.S.N., 2020
Miami

Amanda Lipp, 2020
Sacramento, Calif.

Jacqueline Martinez, C.P.S., 2019
Revere, Mass.

Captain Stacey L. Owens, 2021
Simpsonville, S.C.

Micah Pearson, 2020
Las Cruces, N.M.

Steve Pitman, 2021
Lake Forest, Calif.

Catherine “Carrie” Roach, M.S., 2019
Saint Paul, Minn.

NAMI Ambassadors



Utkarsh
Ambudkar



Elise N.
Banks



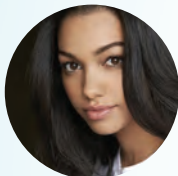
Andrea
Barber



Mayim
Bialik



Carly
Chaikin



Corinne
Foxx



Clark
Gregg



Taraji P.
Henson



Chris
Hubbard



Brooke
Johnson



A.J.
Mendez



Mauro
Ranallo



Frank
Shamrock



Wil
Wheaton



DeWanda
Wise

NAMI Influencers and Supporters

Mädchen Amick
Maria Bamford
Beartooth
Melissa Benoist
Maurice Bernard
Sterling K. Brown
Jamie Gray Hyder

Naomi Judd
Demi Lovato
Dawn McCoy
Jay Mohr
Stefania LaVie Owen
David Spade
Morgan Stewart

Stolar
Alessandra Torresani
Tritonal
Kota Wade
Chris Wood

NAMI Corporate and Philanthropic Partners

100 Women in Finance
A&E Network
Acadia Pharmaceuticals Inc.
Aetna Foundation
Alkermes
Allergan
Allergan Foundation
Anthem Association for Accessible Medicines
Anthem Foundation
Astellas US, L.L.C.
Astellas USA Foundation
Awareness Coffee Company
AWE
Beacon Health Options
Bearaby
BedHead Apparel
Biotechnology Innovation Organization
Boehringer Ingelheim
Bristol-Myers Squibb
CAMI NYC
CARF International
Centene Foundation
College of Psychiatric & Neurologic Pharmacists
Corcept Therapeutics
Eli Lilly & Company
Epic Games
EY
Facebook
FOX Sports
Futurism
Genentech
Hudson's Bay Company Foundation
HCA Foundation
Hearst Foundation
Indivior PLC
Instagram
Intra-Cellular Therapies
J. Willard and Alice S. Marriott Foundation
Janssen Pharmaceuticals
Kaiser Permanente
Kenneth Cole Productions
Lokai Holdings
Lundbeck Mental Health Management, Inc.
Magellan Cares Foundation
May and Stanley Smith Charitable Trust
Michelin Charity Golf
National Grid
Neurocrine
Neuronetics
One Shot Gurl
Otsuka Pharmaceutical
Palayam Foundation
Participant Media
Pfizer
philosophy
PhRMA
Publicis Health
Real Talk Entertainment
Revolutions Per Minute
Sage Therapeutics
Shouvlín Foundation
Showtime
Stance Healthcare
Strategic Behavioral Health
Sub City
Sunovion
Takeda
Teva
The Boeing Company

2018 LEADERSHIP ALLIANCE DONORS

We are grateful for the support of all NAMI Leadership Alliance donors, including many who choose to remain anonymous.

A Foundation of Philanthropic Funds	Andrew and Diana Dempsey Charitable Fund	Jeffery and Sandra Baiocco	Dean and Gail Bennett
A. E. Dott & Associates	The Andrew J. and Anita G. Frankel Family Foundation, Inc.	Julia Bajereanu	Irving and Ruth Prager
Donald and Margaret Abells	Maria Andrews	Anne Marie Baker	Marsha Bennett
Rick Abrams	Valerie Andries	Paul Baker	Megan Bennett
David Abramson	Angleton Independent School District	Robert Baker	Bruce Benzler
ACFEA Tour Consultants, Inc.	Brett and Dale Angney	Stacie Ballard	Adriana Berberich
Karen Achenbach	David Anisman	Neelesh Bangalore	Nora Berdelle
Kenneth Ackerman	Cathy Anthony	Lisa Banks	Kathryn Bergin
Acorio	Aon Foundation	Adrienne Baranowitz	Joan Berkowitz
Kathryn Adamiak	James Apple	The Barbara and Edward Scolnick Family Fund of The Philadelphia Foundation	Andrea Berman
James Adams	Bennett and Sheila Applegate	H. Barber	Andrew Berman
Karl Adams	Suzie Arabian	Carolyn Barelli	Marjorie Berman
Marci Addington	Dave Arakelian	Deborah Barger	Marilyn Best
Amir Adeli	Diane Arber	Joel and Sandra Barkan	Steve Best
Peter Adler	Dorothy Archdeacon	Ellen Barley	Beta Sigma Phi
Jonathan Aebischer	C. Argenta	Mary Barneby	Gloria Beyer
Kenneth Agema	Lisa Arnold	James Barnhart	Heidi Bezaire
Saumya Agrawal	Tina Arnold	Barr Charitable Foundation	Ann Bibb
Siena Aguayo	Dave and Beth Arnott	Sharee Barrera	Tatiana Bidikov
Olga Aigner	Gwen Art	Nora Barsuk	Big East Conference, Inc.
Wesley and Audrey Albert	Arthur and Edith Stern Family Foundation	Beverly Barsy	Birchall and Hampton LLC
David and Maryann Albonesi	Arthur C. Nielsen, Jr. Family Charitable Trust	Andy Bartholomew	Bishop Watterson High School
Chelsea Albright	Nallakkan Arvindan	Mary Bartlett	Marilyn Bittan
Allen Alchian	David Ashcroft	David Bartz	Ron Bittner
Mark Aldous	James Ashland	Jill Barville	Gary and Lorna Bjorklund
Cary Aldridge	AssetMark, Inc.	Norm and Ellen Batt	Cheryl Blackwell
Mark Alesse	Russ Atha	Robert and Laura Bruce	Lisa Blackwell
Crystal Alexander	Scott Atkinson	Mark and Laura Battaglia	Norman Blair
Brandon Allen	Mandie Aubrey	Jeremiah Bauman	Karen Blanco
Kimberly Allen	Paul and Barbara Averill	Vicki Bauman	Marilyn Blaser
Cheri Alley	Paul and Carol Auer	Robert Baxter	Jocelyn Blaskey
J. David and Sherry Almeida	Susan Auerbach	Bay Ridge United Methodist Church	Maureen Blilie
Alpha Kappa Alpha Sorority, Inc. Alpha Xi Omega Chapter	Andrea Augustine	Diane Beal	Helen Bliss
Alpha Kappa Alpha Sorority, Inc. Xi Lambda Chapter	Paul Averill	Bear Sontz Family Foundation	Cindy Bliss
Randy and Maria Altmayer	Enrique and Jennifer Aviles	Linda Beard	Harold and Jeanne Bloom
Karla Alvarez	Yalcin Ayasli	Deborah Beards	Paul Blough
Paula Alvarez	Robert and Margaret Ayres	Melinda Beck	BNY Mellon Wealth Management
Samantha Alvarez	Sam Azarela	Stephanie Beck	Donald and Janet Boardman
James and Stacie Aman	Jeffrey Baab	Bruce and Sylvia Benzler	Christine Bobst
Jean Ambler	Beth Bacall	John and Priscilla Becker	Elizabeth Bodisch
American Family Insurance Dreams Foundation	Lauren Backes	Les and Cynthia Becker	Joan Boegel
American Foundation	Jackie Badders	Bob Beckham	Michael Bogan
American Hospital Association	Laura Baden	Judith Beckman	Frederic and Jeannette Bogart
Bera Amn	Karl Baer	Stephen Beckman	Jonathan Bohlmann
Sue Amundson	John Bagley	Jacob Bedrossian	Eileen Bohrer
The Anbinder Family Foundation	Emily Bailey	Allan Beetle	Nena Bonadarenko
John W. Anderson	Lagenia Bailey	Karen Bell	Sandra Bonilla
Lynne Anderson	Donald Bainbridge	Whitney Bell	Katherine Bosch
		Larry Bellman	Lorraine Bosche
		Robert and Arleen Belyea	Christine Boumann
		The Benhaven Group, LLC	Tobi Bounds
			John Bourget
			Carolyn Bowen



Norman and Mary Jo Bowers	Bundle of Holding LLC	Beth Charas	Nicholas Colucci
Sharon Bowyer	Allan Burdick	Charles and Frances	Columbia Grammar and
Bowyer Living Trust	Char Burkett-Sims	Kempler Foundation	Preparatory School
James Boyd	Mike Burkhardt	Andrew Chase	Christine E. Comer
Margaret Braband	Felice Burns	Jeremy and Christine Chase	Brandon Conder
Betsy & Norma Brach	Thomas Burns	Iris Chavarria	The Conerly Family Fund
Sheila Brack	Timothy Burns	Andrew Cheaney	of the North Texas
Chris Bradberry	Hanna Burruss	Benny Chen	Community Foundation
James Bradford	Chris Burton	Hillary Chen	Cathy Conrad
Paul and Cindy Bradrick	Kevin Burton	Jenny Chen	Kaleigh Conway
Allan and Mary Burdick	Rachel Bush	Sharon Cheng	Leah Conway
Gaetano and Elvira	William Bushfield, Jr	Sabrina Cherry	Charles Cook
Brancaleone	Rafael Bustos	Cynthia Chestney	Jane Cook
Patricia Brande	Rosalie Bustos	Patricia Chevalier	Mary Lou Cook
Heidi Brandemuehl	Martha Butner	Wallace and Edith Ching	Charlotte Cooksey
Stephen Brannan	Mary Buysse	Vanessa Chionchio	Amy Cooper
Graham Branton	Kathy Byington	Chisholm Trail	Joshua Cooper
Marsha Brauen	John Byrne	Technology Center	Stephen Cooperman
Ida Braun	Linda Byron	Anna Chitwood	George and Jennifer Corbin
Susan Braunwald	Kye Byun	Daniel Chow	Kenzie Corbin
Haley Brazeal	Laurie and Richard Calder	Wilson Chow	Karen Corby
Madeleine Breen	Delois Caldwell	The Chris and Melody	Francis Corcoran
Freda Brehm	William and Michele	Malachowsky Family	Jason Corn
Carolyn Breihan	Cambardella	Foundation	Sherry Cornett
Debra Brensinger	Bernadette Camera	Joan Christie	Marcia Coster-Schulz
Carla Brewer	April Cameron	The Chubb Charitable	Hillary Coustan
Terry Bridges	Glenn Campbell	Foundation	Edwin Cowen
Bright Funds Foundation	Karen Campbell	Barbara Chuko	Steve and Sharon Nakase
Adam Brill	William Campbell	Susan Church	Grant Cox
Joseph Bristol	Mary Candland	The Circle of Service	Koriann Cox
Paul Britt	Candle Warmers Etc.	Foundation	Barbara Coyne
Dwane and Virginia Brittain	Laurie Canfield	Evelyn Clair	Judith Craig
Ginny Brittain	Jennifer Cannefax	Erica Clark	Rebecca Craig
Chandler Broadbent	Capella University	Jacque and Chris Clark	Richard Crake
Damian Broccoli	Capital Group	Lee Anna Clark	Roger Cram
John Broghammer	Yale and Sue Caplan	Tracy Clark	Victoria Creeden
Phil and Lynda Bronson	Capossela, Cohen, LLC	Theresa Clarke	Charlie and Kathy Crispino
Donna Brown	Sara Carlberg	Dawn Clearence	Gerald and Sandi Croan
Glenn and Margaret Brown	Douglas Carlson	Jeannine Cleary	Elaine Crocker
Jackie Brown	James Carney	Cindy Clemens	Patricia Crockett
Karen Brown	Kirby Carreon	Carol Cleveland	Elisabeth Crosby
Lisa Brown	William N. Carroll	Cindy Cleveland	David and Elizabeth Cross
Mary Brown	David and Rosemary Carson	Gabriel Clothier	Philip Crow
Debra Brownstone	Jason Carter	Engjellushe Cocka	Kathleen Crowley
Eugene Bruce	Kristin Casado	Lawrence Coe	Anna Crum-Griesmer
Robert Bruce	Martha Cassidy	Patrick Coffey	Stephanie Cruse
Rebecca Bruckert	Gilbert Cattoor	Allan Cohen	Michael Crutcher
Robert Brumley	Peter Caulo	Andrew and	George Cruz
Jim Brunke	Nancy Cavender	Denise Cohen	Mark Cunard
Matthew Bruno	Gary Cederquist	Austin Cohen	William J. Curley III
James and Sylvia Bryan	Lynette Cederquist	Edward Cohen	Abigail Curtis
Maria Bryant	Centennial Choir Boosters Club	Ellen Cohen	Meg Cusack
Maccon Buchanan	Central Florida Behavioral	James Cohen	Custom Ink
Deborah Buck	Health Network, Inc.	Lilia Cohen	Fundraising
James Buck	CGI Technologies	Martin and Nancy Cohen	Diana Cutler
Leslie Buck	and Solutions	Don and Mary Coker	Robert and Mary Sample
Frederick Buckner	Marc Chadwick	Ruth Colman	CVC Capital Partners
Bonnie Bufkin	Vijay Chandar	Jose M. Colon	CVR Associates
Scott Bulger	Mardie Chapman	Michael and Carla Colton	Charles Cycon

Stephen Parker and Tami Cyrluk D A Davidson & Co Nicky D'Agostino Barbara Dahl Dorothy Dake Ellen Daley Veronica Daly Dancing Tides Foundation, Inc. Alan Danforth T. Daniels Thomas Darling Jill Darrow Nathan Darrow Rian Dartnell Pat Dash Dean Dauger Elizabeth and Kent Dauten Sarita Dave David C. and Lura M. Lovell Foundation Christopher Davis J. and Sue Davis Janet Davis Natalie Davis Norma Davis Richard Davis Tara Davis Mary Dawson Kathryn Day Tina Deane Jessica DeBorke Anne Decker Cecilia Decker Phyllis Dedoes Dennis Deely Mary Deering Aniko Delaney Julian DeLehman Delta Vacations Robert DeMaster Andrew Dempsey John Dempsey Meredith Dempsey Shad Dennis Kelly Derby Robert Dern Jennifer Derosier Nicole Derrick Suzanne Desforges Donna Detweiler Isabella Detwiler Martha Diamond Kenneth Dickson Mark Dickson Robert Diefenbacher Jess Dietch Liane Dietrich Lisa and David Diffley	Josh Dillon Vincent and Beth DiMaria Irina Dimitrov Jacquelyn Dirvaut Kristina Ditullo Delano Dixon DJ Findley Family Foundation Barry Dobil Beth Dobson Peter and Julie Dodge William and Denise Drexel Mehmet Dokucu The Dolan Family Foundation Karen Dolins Mary Ann Doll The Donald A. & Alice L. Tollefson Foundation Inc. Donnalee C. Rhodes Trust Evelyn Donnell Patrick Donohue Dorchester County Career and Technology Center Sam Dorman Robert Dormer Des Dorsaneo Mark and Ellen Dorval Barbara Dowd Dave and Linda Downes Andrew Doyle Catherine Drake Julia Drake David Dreman William Drexel Chris Drush Angela Duckworth Joe and Loretta Duckworth Douglas Ducote Janet Dufilho Esther Dunhoff Andrew Dunn Anita Dunn Jim Dunn Mary Dunn Valerie Durrant Dutchess County Sheriff's Employee Association Tabitha Dwier Andrew and Martha Dwyer Barbara Dwyer Beryl and Marlene Dyer Elisabeth Dykens Dorothy Dykers Pamela Eagan The Earl and Shirley Greif Foundation Trust Mary Early Jo Anne Earp Pat East Roland Eavey	Jim and Linda Ebert Mark and Mary Elmgren Esta Eberwine Mark Eberwine Ronald Echandia Beatrice Eckertson Kathie Eckman Justin Edelstein Rebecca Eden Jacob Edling Alison Edwards Ann Edwards Jackie Edwards Jessica Edwards Richard Edwards Laurence Eggers Richard Ehrler Joseph Eisler Gayle Eisner Elinor Beidler Siklossy Foundation Karen Elliott Lisa Elliott Rebecca Elliott Gail Ellis Charles and Margaret Elmer Mark Elmgren Nicole Emerson Eric Emshoff Mary Endres Kristen Engelhardt Anna Engle Mia Engle Mark and Nina Engstrom Ken and Marge Epstein Jon and Sarah Erdman The Ernst & Gertrude Ticho Charitable Foundation Andrea Escobar Anne Esker Gene Esswein Estate of Carla Wuchner Estate of Daniel Drances McGrath Estate of June Sailor Estate of Leonard J Murdock Estate of Marc J. Altman Estate of Richard Kosiba Elizabeth Estrine Leeann Ettinger Grace Evans Karen Evans Mark Evans David and Shirley Evenson Mark Evenstad Mark Ewing David Exner Leroy and Kathleen Faerber Robert Fagenson	Fairfield County's Community Foundation Rumi Faizer Thomas Falgout, Sr and Carmer Falgout Jack and Reva Falk Dave Faloon Robert Farias Lynette Farinas May Farr Jesse Farrar Breege Farrell Jessica Farris Wende Farrow Lois Feinblatt Zachary Feingold Linda Feist Charles Felice Terty Felker James and Tammy Felt Joseph and Marcelline Felter Kevin Feltes Amy Feng Gary Fennan Rebecca Fenton Kelly Ferenc Sylvia Fergus Ilona Ferker Vanessa Fernandes The Fernwood Fund Blake and Melissa Fetrow Chuck and Sue Fienning Marina and David Fienup Judith Fiermonte Michael and Elizabeth Fieweger Naji Filali Bruce Filippi Milton and Sheila Fine The Fine Foundation Neal and Jean Fink Philip and Lisa Crow Julie Finley Andrew Finn Monroe and Marsha Firestone First Presbyterian Church Ranee Fischer Janice Fiske Fitts Family Foundation Alice Fitzgerald Donna Fitzgerald David and Maren Fitzgibbons Joseph Fitzpatrick Five Star Sheets, LLC Richard Flaherty Patricia Flanigan Austin Fleming Linda Flinn Carol Flint Pat Flood
-----------------------------------------------------------------------------------------------------------------------------------------------------------------------------------------------------------------------------------------------------------------------------------------------------------------------------------------------------------------------------------------------------------------------------------------------------------------------------------------------------------------------------------------------------------------------------------------------------------------------------------------------------------------------------------------------------------------------------------------------------------------------------------------------------------------------------------------------------------------------------------------------------------------------------------------------------------------------------------------------------------------------------------------------------------------------------------------------------	-------------------------------------------------------------------------------------------------------------------------------------------------------------------------------------------------------------------------------------------------------------------------------------------------------------------------------------------------------------------------------------------------------------------------------------------------------------------------------------------------------------------------------------------------------------------------------------------------------------------------------------------------------------------------------------------------------------------------------------------------------------------------------------------------------------------------------------------------------------------------------------------------------------------------------------------------------------------------------------------------------------------------------------------------------------------------------------------------------------------------------------------------------------------------------------------------------------------------	------------------------------------------------------------------------------------------------------------------------------------------------------------------------------------------------------------------------------------------------------------------------------------------------------------------------------------------------------------------------------------------------------------------------------------------------------------------------------------------------------------------------------------------------------------------------------------------------------------------------------------------------------------------------------------------------------------------------------------------------------------------------------------------------------------------------------------------------------------------------------------------------------------------------------------------------------------------------------------------------------------------------------------------------------------------------------------------------------------------------------------------------------------------------------------------------------------	--------------------------------------------------------------------------------------------------------------------------------------------------------------------------------------------------------------------------------------------------------------------------------------------------------------------------------------------------------------------------------------------------------------------------------------------------------------------------------------------------------------------------------------------------------------------------------------------------------------------------------------------------------------------------------------------------------------------------------------------------------------------------------------------------------------------------------------------------------------------------------------------------------------------------------------------------------------------------------------------------------------------------------------------------------------------------------------------------------------------------------------------------------------------------------------------------------------------------------



Anne Flosi	Karen Gabrielson	Joan Golbin	Thomas Guins
Barbara and Raymond Flunker	Jesse Gaddis	Patricia Gold	Alex Gunderson
Brent and Jodi Flynn	The Gaddis Family	Kathleen Goldammer-Copeland	Noel Gunther
Paul and Dorothy Flattery	Foundation, Inc	Kathleen Goldblatt	Karl Guntheroth
Foe State Youth Group	Basya Gale	Andrea Goldenson	Marlene Guthrie
Robert Folberg	Hugh and Rita Gallagher	Marlene Goldfarb	Laura Guy
Don Foley	Marisa Gallagher	Eve Goldman	Carol Hagel
Matthew Foley	James and Janice Gambach	Goldman Sachs	Melody Hainline
Elaine Fontana	Anne Garber	Philanthropy Fund	Doris Hall
Frcnis Beidler Foundation	John Gardella	Robin Goldstein	James and Diane Hall
Anni Ford	Barbara Gardner	Terree Goldstein	Patricia Hall
Gary and Nancy Ford	Catherine Gardner	William Golike	Victor and Kathleen Hallberg
Kari Ford	Gordon and Joyce Garner	Heather Goodman	Marilyn Halonen
Bruce and Kathleen Foreman	Major Garrett	Sharlene Goodman	Tema Halpern
MentorMore Foundation	Marcela Gary	Mary Goodson	Margaret Hamer
Alan Fox	Gary Goodgear Emergency	Donald and Sarah Goodwin	Kayla Hamilton
Kimberly Fox	Assistance Foundation	Grace Goracci	Tom and Carolyn Hamilton
Leslie Fox	Gary L. Resnick	Ellen Gordon	Carl & Cynthia Hammer
Lydia Fox	Revocable Trust	Albert Gore	Jerry and Joelle Hamovit
Franciscan Sisters of	Sharon Gaskin	Tipper Gore	Laura Hance
Perpetual Adoration	Lorna Gauthier	Andrew Gormally	Barbara Hancock
Jill Franco	Theresa Gegen	Sanjay Goskonda	Michael Handler
Luisa Francoeur	Jim Geib	Lori Gottschalk	William Haney III
Linda Frank	Jayne Geiger	Jennifer Gover	John and Karen Hangartner
Phyllis Frank	Gelber Foundation	Stacy Grabar	Katherine Hanscom
Donna Frankel	Genesee Health System	Christine Grad	Jack Hansen
The Freda R. Brehm Charitable	Judy Gentile	Andrew and Janet Graham	Linda Harding
Remainder Unitrust	Jim and Patti George	Lee and Betty Graham	Mary Lou Harding
Stephen Fredman	Jim George	The Gralnick Foundation	Joan Hardy-O'Brien
Jonathan Freeman	George Cohee Jr. Foundation	Robert Granat	Bo Harkness
Lucile Freeman	George Lucas Family	Alison Granbery	Charles Harman
Erin Freiberg	Foundation	Craig Grant	The Harold R. Goldmann
Ken Freiborg	Richard and Janice Yasko	Melanie Grant	Charitable Trust
John Frelinghuysen	Gertrude B. Nielsen	Noa Grant	Lorine Harr
Peter and Mary Virginia Frenzer	Charitable Trust	Sheila Grant	Pam Harris
Fried, Frank, Harris, Shriver	GGE Foundation, Inc	Thomas Gravina	Tricia Harris
& Jacobson LLP	Walter and Susan Ghijsen	Allison Gray	Donald Harrison
Dave Friedel	Robert Giannasi	Sally Gray	Wadleigh Harrison
Lawrence Friedland	Norma Gibbs	Greater Horizons	Douglas Hart
Glen and Elizabeth Friedman	Mary Gibson	Anthony Greco	Patricia Hart
Laurie Friedman	Paul Gibson	Kevin Green	Thomas Hartford
Stew and Hallie Friedman	Carl Giessel	Richard Green	Gretchen Hartlage
Kristen Friedrichs	Giglio Charitable Fund	Suzanne Green	Sarah Hartman
Friends of Kevin Parker	Matt and Maggie Gignilliat	Francis Greenburger	Ronald Hartnett
Karen Frigon	Rebecca Gilbert	Betsy Samuelson Greer	Nancy Hartung
Jeff Frommer	Donald and Elizabeth Gilchrest	Hilda Greer	Melanie Hauptert
Kevin Fryatt	Mary Giliberti and	Michael Grieco	Ilysha Havens
FS Transportation, LLC	Marcus Holladay	Richard and Ruth Griffin	Robert Haverkamp
Esteban Fuentes	Pete Gillie	Frank Grobman	Dirk Havlak
Joanne Fuentes	C. Bernard Gilpin	Wanda Grossman	Hawthorn PNC Family Wealth
Mark Fuller	Steven and Karen Gissin	Douglas Grove	James and Catherine Hayes
Patricia Fuller	Arnold Glaberson	Wendy Gruenberg	Kathryn Head
Cammie Funston	Solange Glaize	Tim Buttke and Kay Gruling	Rogers Healy
Bill Furcht	B. Judith Glassman	Mary Ann Guarre	Lowell and Melvina Heap
Richard Furniss	The Glickenhau Foundation	Esteban and Mary Fuentes	Lorna Hebert
Annette Furst	Kristin Glywasky	Sam Guerrera	Pamela Hebert
Thomas Furth	Steve and Aileen Gnatz	David and Margie Guggenhime	David Heckman
G. B. & M. May Foundation	Colin Goddard	Claude Guidroz	Jennifer Hedgepath
G. J. Brown Charitable Trust	Goelet Family Foundation	John Guiney	David Hegarty

Michael Heger	George and Marian Howe	The Jersey City Public Schools	Dana Kauffman
Warren Heilker	Howell Family Charitable	Alissa Jijon	Larry Kaufman
Joseph Heins	Foundation	Steve and Barb Jirsa	Larry Kaufman and
Heather Heller	Laura Howrey	Joe Hutcheson	Margaret Morgan
Stuart Heller	Maureen Hoyer	Memorial Fund	Ruben Kaufman
Kevin Helms	Toni Hoyt	Bryan Joffe	Sukhpreet Kaur
Heidi Henri	Carl R. Hubacher Jr	The John F. Maher	Fuat Kavak
Janalie Henriques	Susan Hubbard	Family Foundation	Thomas and Monique
The Henry Foundation	Patricia Huber	Ann Johnson	Kavanagh
Gary Henschen	Stephen Huff	Carol Johnson	Gary Kay
Ann Herbert	Lee and Susan Hughes	Cindy Johnson	Dr. Maz Kazahaya
Donald and Bluma Herman	Emily Hunsucker	David Johnson	Misha Kazhadan
Ruth Anne Herman	Laura Hunter	Diana Johnson	Doug and Luci Keazer
Jonathan Hernandez	Linda Husar	Greg Johnson	Richard and Betty Kelble
Susan Herrick	Daniel Hutcheson	Judy Johnson	Tim and Julie Kelleher
David Hershberger	Anna Hutchinson	L. P. Johnson	William Keller
Kelly Herther	Keren Hymo	Laura Johnson	Bill and Julie Kellner
Jan Hess	John Hynson	Leonard Johnson	Carter Kelly
Rob and Jean Hess	Mohammad Ibrahim	Marilyn Johnson	Judith Keltner
Rob Hess	ImpactAssets, Inc.	Robert Johnson	Judith Kemnitz
Julie Hessler	Joseph Impullitti	Rosa Johnson	Michael and Mary Kempf
Kim Hettena	Independent Project	Tom and Bonnie Johnson	Stephen and Lynn Reilly
David and Mary Hibdon	Analysis, Inc.	Andrae Jones	Laurie Kenfield
David Hibdon	Alison Ingersoll	Ken Jones	Suzanne Kennan
Richard Higger	James and Jacqueline Inglis	Kirk Jones	Adrienne Kennedy
Steven Higger	Richard and Margaret Inglis	Mary Ellen Jones	George Kennedy
Tim Higgins	Interfraternity Council of	Merton and Catherine Jones	Leslie Kenyon
Kathy Hildenbrand	Michigan State University	Hannah Jones	Emily Kern Metz
Jennifer Hill	Interpublic Group	Tom and Shannon Joplin	Michael Kerrigan
William Hill	Lori Ireland	Chuck and Marcie Jordan	Cathryn Kiddy
Saralee Hillman	Andrea Irvin	Sonia Jordan	Yvonne S. Kilbourne
David Hills	Irving & Shari Weinberger	JPMC Foundation	Heather Killough
Hilltop Foundation	Foundation	Michelle Judson	Frank Kilpatrick
The Hinman Foundation	Steven Izen	David and Marilyn Juillerat	Joanne Kiman
Norman Hirsch	J & J Properties, Inc.	Julio and Ana Gomez	Josh Kimball
Robert Hirsch	J.J. B. Hilliard, W. L. Lyons, LLC	Foundation	Lynn Kimble
Jennie Ho	Rob Jackson	Ryan Kaeding	Allen King
Janet Hobbs	Todd Jackson	Steven Kaiser	Bevinn King
Richard Hoffman	Judith Jacobs	Gina Kamentsky	Leeanne King
Christine Hogan	Martin Jacobs	Tom Kammerer	Suzanne King
Melinda Holladay	Paul Jacobsen	Lyrin Kanczuzewski	King Family Fund
Jeff Holman	Deborah Jaffe	Tyler Kanczuzewski	King of Glory Lutheran Church
Bradley and Linda Holt	Kenneth Jaffe	James Kandell	Colleen Kinnear
Susan Homsher	Margaret Jahn	Barbara Kane	Kinschner Family Foundation
Ron and Lynda Honberg	Dr. Rakesh Jain and Dr.	Janet Kane	Barbara Kiouss
Nancy Honeywell	Saundra Jain	Morton Kane	Matt and Shirley Kirby
Kessely Hong	Heather James	Kane & Company, PA	William and Lenore Kirby
Alison Hooker	Nikki James	Julie Kaneb	Rebecca Kirshenbaum
David and Rosemary	Ricardo Jamin	Abraham Avi Kaner	Wally Kissel
Hopkins	Charles Jasicki	Kanesathasan Charitable Trust	Richard Klaas
Karen Hopkinson	James Jaskot	Jan Kang	Rita Klein
John Horner	Derek Jaskulski	Julie Kant	Susan Klueger
Sari Hornstein	Helene Jefferson	Ross and Laura Kaplan	Jonathan and Vickie Kobak
Craig Horowitz	Jeffrey J. and Mary E.	Charlotte Karls	Kelsey Kobayashi
David Hoseilton	Burdge Charitable Trust	Karma 4 Change Foundation	George and Jutta Kohn
Terry and Carol Hottman	Marcia Jeffries	Aaron Kasman	Karl and Margaret Kohn
Jacqueline Houston	Ann Jenkins	Joan Kasner	Mark Koller
Albert Howard	Jessica Jenkins	Jessica Kasten	Adel Korkor
Philip Howarth	Darrel Jensen	Sarah Katz	Ron Korte



Patricia Kosiba
 Suzana Kosmala
 Jonathan Koster
 Ruth Kotecha
 BJ Kowalski
 Kownacki Media Holdings LLC
 The Kraft Group
 Karen Krag
 James and Celeste Kramer
 Michael and Barbara Krancer
 Ellen Krantz
 Aaron Krasner
 Helen Kraus
 Colleen Krausmann
 William Krauss
 Wallace Kremer
 Therese Krieger
 Gretchen Kroll
 Ken Kronner
 Kathryn Krotz
 Jennifer Kruger
 Marilyn Kucharski
 Nathan Kueshner
 Karin Kuhns
 Chip and Barbara Kurtzman
 Kurzman Eisenberg Corbin
 & Lever, LLP
 Lonnie Kwa-Humphries
 Shuk Kwan
 Miwon Kwon
 Patricia La Noue
 Elizabeth LaBarge
 Stephen LaBrecque
 Kara Lace
 Margaret Lachance
 Simon Lack
 Dominique Lahaussais
 Leone Lain
 Lauren LaMarca
 Dee Anne Lamb
 Caren Lambert
 Bill and Nancy Lambertson
 John Lane
 Jill Lapides
 Brian Larsen
 Nancy Lasik
 Yvonne Laun
 Denise Lauria
 Wendy Lavallee
 Keisha Lawrence
 Rene Layton-Carroll
 Leigh Anne Leas
 Julie Leavitt
 Hannah Leckman
 Abbott Lee
 Carolyn Lee
 Eumin Lee
 Jason Lee
 Justin Lee

Mary Lee
 Randy Lee
 Roland Lee
 Lee Family Foundation
 Stacy Leeper
 Tina Lees
 James Lefere
 Judith Leftin
 Anthony Leggett
 William Lehman
 The Leibowitz and Greenway
 Family Foundation
 Annaliese Lemmon
 Lauren Leonard
 Carol Lerfald
 Nels and Patricia Lersten
 Jean Lesieur
 Daniel Lessin
 Elizabeth Lester
 Kenneth Lester
 Lester Poretsky Family
 Foundation, Inc
 Eric Levin
 Jonathan Levin
 Bernice and Linda Levine
 Howard Levy
 Matt Lewis
 Sofi Lewis
 Judy Leyshon
 Richard Lidstad
 Stephen and Constance Lieber
 Ginger Liemohn
 Dennis and Marilyn Lighton
 Steven Lim
 Peggy Lin
 Peter Lin
 Thomas Lin
 Michelle Lind
 Bradley Lindenbaum
 Samuel Lindenber
 Jim Lindner
 Bill and Peggy Lindsey
 Jessica Link-Malcolm
 Kristin Linzmeyer
 Cory Lipoff
 Doug and Pam Lipp
 Robert Lister
 Jessica Litman
 Anna Liu
 Rui-Ming Liu
 Tally Liu
 Laura Livaccari
 Mindy Lively
 Chris Livergood
 Margery Livingston
 Jocelyn Lo
 Clary Lobato
 David Lococo
 Mary Clare Loftus

Carol Loggins
 Logistick
 Roger and Claretta Longden
 Colin Longmuir
 Loomis Foundation
 Betsy Lord
 Jack Lorenzo
 Robert and Nettie Losey
 Louis Messer and Helen
 Messer Charitable
 Foundation
 Nicholas Lovejoy
 Ruth Lovejoy
 Anahita Lovelace
 Gary and Lynn Loving
 Todd Lucas
 Lucille Ellis Simon Foundation
 Pamela Lugos
 Lynette Lum
 Patricia Lunden
 Ted Lundin
 Greg Lyon
 Suzan Mabe
 Mesa MacDonald
 William MacMillan, Jr
 Robert MacMullin
 Caroline MacQueen
 Kaelyn Madery
 David Maganza
 Magowan Family Foundation
 John and Ann Maguire
 Joseph and Sharon Muscarelle
 Anthony and Susan Maiello
 Alejandro Malespin
 Katherine Malik
 Matthew Manix
 Steven Mannos
 Manny and Ruthy Cohen
 Foundation Inc
 Jeffrey Marcus
 Jerry and Elizabeth Marcus
 Allison Margolis
 Betsy Margulies
 Marin Community Foundation
 Christopher Marino
 Mark and Muriel Wexler
 Foundation
 Tom and Marilyn Marker
 Susan Markovich
 William Marron
 Nathan Marshall
 Karen Martin
 Neil Martin
 Robert Martin
 Steve Martin
 Paula Martinez
 Rick Marx
 Mary and John Grant
 Foundation

Mary Cooney and Edward
 Essl Foundation, Inc.
 Lisa Maska
 Adam Mason
 Andrea Mason
 Don Mason
 Heather Mason
 Andrew Masse
 Andrej Mataruga
 Robert and Holiday Matchett
 Richard and Linda Matheny
 Brad Mathiowetz
 Ambrish Mathur
 John and Mary Parrish
 Allan Matusevich
 Gerald Mauch
 Fred and Christine Maxfield
 Kay Maxfield
 Tom Maxfield
 Rachel McAdams
 McAllister Family Foundation
 Bonnie McCabe
 Eugene McCall
 Jeremy McCallum
 John Riley McCarten
 Eric McCarver
 Judy McCleary
 Jacob McCollum
 Joel McCrory
 Catherine McCumber
 RaeJeanne McCutcheon
 Kimberly McDonald
 Mike and Karen McDowell
 Mike McDowell
 Susan McFadden
 Landis McGauhey
 Chris and Denise McGillicuddy
 Doug McGillivray
 Kyle McGinley
 Karen McGuinn
 Warren McHale
 Thomas McIntee
 Gordon McIntosh
 Sean McIntosh
 Ruth McIntyre
 Laura McKeane
 Theresa McKenty
 Tayne McKinnon
 Christina McLean
 Janice McMahan
 Joe and Paula McManus
 Rick and Lynn McNabb
 Tracy McNevin
 James and Diana McNish
 Anne McPeak
 The McPeak Giving Tree
 Laurel McPherson
 James and Kelly McShane
 Molly McShane

McSwane Family Charitable Fund at East Texas Communities Foundation	T.M. Mobley Michael Mocerì Jim Mode	Chris and Betsy Newlon Viet Nguyen Martina Nicholson	Simone Pace Shankar Padmanabhan Evan Pagano
Laura McTaggart Tom McVarish Tasha McVeigh	Julie Mohr James and Marilyn Moidel Tanya Mongitore	Barbara Nickerson Rebecca Nielsen The Nirvana2457 Fund	Lisa Page Prakash Palimar David Palmer
McWilliams Family Foundation Chris and Lauren Mead William and Jennifer Mead	Frank Monteiro Geoff Montgomery Lisa Moon	Barry Nobel Annette Noble Lilly Noble	Lauren Palmer Carla Palmore Lori Paporello
Chris and Joy Meade James Meadows Bailey Medley	Kimberly Mooney Chris Moore Cynthia Moore	John and Linda Nordin Jean Norman Audrone Norusis	John Pappajohn Han Parish Bonnie Parker
Ronald and Donna Medlock Mary Meelia Barry and Karen Meguiar	Lynn Moore Patricia Moore Christina Mora	John Novak Carol Novick Addie Null	David Parker Elizabeth Parkinson Walter and Sharon Parks
Peggy Melanson Ray and Eleonore Meline Amy Melton	Juan Mora William Moreton Don and Betty Morganstern	The Oakland Raiders Bill and Karen O'Brien Marnie O'Brien	Scotty Parra Matthews John Parrish Andrea Pasek
Menus Catering James and Victoria Merchant Frank and Debra Bergmeister	Jeffrey Morris Deborah Morrison Josephine Morrison	Barbara O'Connell Janice O'Connor Kathleen Odell	Marli Pasternak Kena Pastore Vipul Patel
Olivia Mesmer Jayne Meyer Quentin Meyer	Emily Mortazavi William Mosakowski Donna Moschetti	Heather Oden Bryan Odiamar Christine Odom	Patricia W. Cliff & Karl Von Frieling Foundation Mary Patton
Meyer Charitable Foundation Meyer Family Foundation Roger Meyers	Susan Moskwa Michelle Mosqueda Pete and Mary Ann Moxon	James Odonovan Carol Oettinger Cynthia Ofer	Arun Paul Paul and Patricia Curran Foundation
Lisa Miao David Michael Lisa Michael	Steven Moya Brian Mulroy Mary Murfey	James and Teresa Ogle Russell Ogle John Oglesby	Larry Pearl Lenore Pearlman Philip Pearsall
Michel and Claire Gudefin Family Foundation Frank Micheletti	Brian Murphy David Murphy Donna Murphy	Arthur Okamoto Gerard O'Keefe Ruth O'Keefe	Tonya Pearson Rene Pecson Mary Pedrosa
Laura Milazzo Paul Milbury Cassi Miles	Joe Murray Patricia Murray Joseph Muscarelle	J. Patrick O'Leary Rozanne Oliver Scott Olofson	John Peltier Devon Penney Jim and Susie Perakis
Barbara Millar Kenneth Millard David Miller	Sally Muspratt Ferdinando Mussa-Ivaldi Gordon Myers	Paul Olson Richard and Lynne Olson Janet O'Malley	Linda Pereira Hansen Tammy Perham Kendall Perkins
Jay and Anna Keene Miller Jeff and Phyllis Miller Joe Miller	Tad Myre Kellie Nace Richard and Betty Nagtalon	JoAnne Omar Brian O'Mara David and Lynn Oppenheim	Robert Permut Mary Perschy Pershing
Joel Miller Judith Miller Lynne Miller	Naida S. Wharton Foundation Steve Nakase National Guardian	Susan Oppenheimer Oppenheimer & Co. Inc Nancy Orbison	Pamela Peters Elaine Petersen Cindy Peterson
Mark Miller Nancy Miller Paul and Mary Ann Miller	Louis Naviasky Navitus Health Solutions Daniel Neal	Steven Orfield Ray and Wendy Orley Norman Ornstein and Judith Harris	Richard and Donna Peterson George Petrides Gregory Petrochenkov
Lauren Mills Maida Milone Milton and Ruth Berman	Richard Neel Willie and Charlotte Nelms Carmen Nelson	William Ortega Nicholas Osborne Leo Oshea	Sandra Petron Mitchell Peyser Andrew Pfau
Family Foundation Kevin and Irene Minerley Barbara Mistler-Crew	Kory Nelson Mark and Constance Alesse Mary Nelson	Meredith O'Sullivan Wasson Gavin O'Toole Bryan Overcarsh	PGA Tour Inc. Ken Phillips Leonard Pick
Mark & Karen Mitchell John and Virginie Mitchem John Mitchem	Michael and Betsy Nelson Virginia Nelson Wayne and Susan Nelson	Cody Owen John and Grace Owens P2 Foundation Inc	Rob Pierson Susan Pileggi Charles and Lindsay Pinkham
Masashi Miyake Steve Mobley	Debra Newall Burton Newbry	Antonie and Ethel Jo Paap	Mary Anne Pinner Larry and Nancy Piotrowski

Jeff and Patty Plantz	John Raitt	Anne Rios	Nancy Russell
Pledgeling Foundation	Anne Rajagopalan	Rise Development	Douglas Russo
The Pletcher French Fund	Dilara Rakhman	Charitable Fund	Patricia Rutherford
Andy and Linda Plitkins	Mukesh Ram	Diane Ritter	Cathy Ryan
Blayne Plummer	Alana Ramai	Ryan Rizzo	Nigella Ryan
Policy Research Associates, Inc.	Smitha Ramesh	Carrie Roach	Whitney Ryan
David and Kay Pollack	Ashoke Rampuria	Jason Robbins	Linda Ryan Dehejia
Pete and Patti Earley	Anne and Bill Ramsay	Robert H Drapeau	Marsha Ryle
Valerie Pollard	Mauro Ranallo	Revocable Trust	Michael Sacher
Glenn Pollner	Lorene Randich	Robert H. Fergus and	Lee Sadja
James and Shirley Bradford	Mark Rapaport	Elizabeth Fergus Foundation	Sage Therapeutics
Mark and Donna Polverelli	Kren Rasmussen	Jim Roberts	Anne Salemo
Poly Drive Elementary School	Sara Ravenscraft	Terrence Roberts	Salesforce.org
Linda Pontious	R. Rawls	Diane Robertson	Susan Salice
Carolynn Pool	David Ray	Terin Robertson	The Salice Family Foundation
Phillip Poole	Alexis Raykhel	Barbara Robinson	William Salton
Karen Pope	RayLign Foundation	Wanda Robinson	Robert Sample
Tom and Betty Pope	Ronald Rayner	Jeremy Robison	Sanford C. Bernstein & Co., LLC
Cathy Poppe	RBC Wealth Management	Tobias Robison	Kurt Sanger
Anthony Pordes	Susan Read	Michael and Kathleen Roche	Brianna Saputo
Jeffrey Porro	Toni Reamer	Fayan Rochowiak	Gwendolyn Satre
Taylor and Katrina Porter	Susan Rebhun	Frances Rockey	Kerry Saul
Susan Portland	Kathy Redante	Robert Rodini	Kristine Sawyer
Elizabeth Post	Jayasree Reddi	Gregory Rogers	Ian Sax
Jerry and Judith Potthoff	Ahir Reddy	Pat Rogers	Annie Saylor
Bonnie Powell	Raju Reddy	Paula Rogovin	John Scalley
George Powell	Charles Reed	Christine Rohan	Darren Schack
Ed and Bitsy Shaw	Reed Family Giving	Keith and Connie Rohman	Michael and Wendy Schaefer
Irving Prager	Anne Reese	Jeanne Rollison	Susan Schaefer
Helmut and Marilyn Prange	Monique Regard	Thomas and Martha Jane	Matt Schainker
Aakash Prasad	Dirk Rehder	Romp	Ron and Marcia Schatz
Karen Prell	Mary Rehnke	Heather Rorer	William Schenk
Colleen Press	Anna Jane Reid	Rorer Foundation	Lynn Schibeci
Susan Price	Summer Reid	Bob Rose	Peter Schildkraut
Barry and Marcy Dobil	Charles Reilly	Jean Rose	Linda Beth Schilling
Mark and Joan Prinsen	Stephen Reilly	Mark and Melanie Rosen	Shlomo Y. Rechnitz
Professional Risk Management	Susan Reimer	Tobias and Elaine Robison	and Tamar Rechnitz
Services, Inc	Barbara Renbaum	Carl and Ruth Rosencrown	Charitable Foundation
Michael Prost	Jeremy Repp	Jacklyn Rosenfeld	Norman and Dee Schnake
Edward Puccio	Heather Rhoderick	Matthew Rosenfeld	Thomas Schnitzer
William Puchlevic	Dorothy Rhodes	Amy Rosenow	Joe Scholz
Nancy Pults	Lewis and Jean Rhodes	Richard and Jane Ross	Julia Schonfeld
Grant Pulver	RHS Foundation	Stephen Ross	Peter and Gwyneth Schroeder
Robin Pulver	Marcia Ribner	Jim Rossman	Celia Schuchman
Philip Purcell	Barbara Ricci	Steven and Mary Roth	James Schufreider
Kenneth and Rona Purdy	Joe and Marilyn Ricci	Florence Rowe	Dan Schulman
Anne House Quinn	Karla Rice	Richard Rowe	David Schulman
John and Tina Quinn	Steve Rich	Gary Ruben	Brian Schultz
Barbara Quintiliano	Cheryl Richardson	Eric Rubenstein	Wayne and Joyce Schut
R & D Exemptions	John and Becky Richardson	Sheila Rubin	Jody Schwab
Thomas and Sheila Rabaut	Peggy Richey	Ann Ruchhoft	Susan Schwab
Marc and Elizabeth Rabinowitz	Taylor Richier	Carol Rudder	Gary and Angela Schwartz
Steven and Donna Rabinowitz	Ricki Jane Faber Charitable	Leslee Rudnick	Ira Schwartz
Adi Radhakrishnan	Remainder Unitrust	Sheryl Rudnick	Robert Schwartz
Laurie Radin	Kimberly Ridge	John and Carolyn Rudolph	Samuel Schwartz
Bill and Rebecca Radue	James Riesterer	Ruth Rudolph	Brennan Schwarz
Barbara Raff	Mary Ellen Rille	Michael Rush	Lee Schwebel
Matthew Raffa	Wick and Betty Rimert	Dannis Russell	Joann Schwentker
kara Raiguel	Louise Rinn	Mitch and Amy Russell	Belkis Sclafani

Robert Scott	Jeffrey Sirota	Denise Stelmacher	Robert and Donna Swanson
Curtis Scribner	Joanna Skinner	Chris and Jennifer Stegner	Jim Swartz
Eric Scruggs	John Skowronski	Pam Stephenson	Jerome Sweeney
Michael and Amy Season	Polly Slavet	Roberta Sterling	Betty Sybesma
Seattle-Sonoran	Sarah Sloan	Emily Stevens	Frances Sylvester
Foundation	Jef and Tracy Sloat	Michael Stevens	Chris Synek
George Seaver	Norman and Linda Small	Thomas Stevens	Catherine Syrett
Lloyd Sederer	Annette Smallwood	Jason Stevenson	Rebecca Tabb
Michael and Patti Sacher	Christine Smiley	Lindsey Stewart	John and Mary Taddiken
Paul Segre	Christine S. Smith	Ron Stewart	Elyse Tafeen
Gerald and Irene Segroves	Douglas Smith	Mary Stewart Baird	Jasvir Taggar
Lisa Seipel	L. P. Smith	Benjamin Stock	Gordon and Ellaine Tagge
Richard Seleno	L.P. and Gloria Smith	Gillian Stoettner	Tampa Bay Technical
Tatiana Seligmann	Mary Smith	Marilyn Stoknes	High School
Raymond Sementini	Michael Smith	Ryan and Emily Stoner	Wesley Tanaka
Dan Sennett	Scott Smith	Joanne Stopka	Tanana Chiefs Conference
Richard Serra	Susan Smith	Robert and Ellen Storck	Nancy Tannen
Srihari Seshadri	Tracy Smith	Manette Storlie	Arnold Tandybaum
Mary Frances Shaffer	Virginia Smith	Steve and Nancy Stoutamire	John Tanner
Patricia Shaffer	Sharon Smith Schilling	Kandice Strako	Judy Tarleton
Diana Shank	Angela Smithson	Emily Straley	William Tausig
Jacqueline Shannon	Marcia Smythe	Jeff and Kelly Straub	Annette Taylor
Kathleen Shannon	Dianne Snedaker	Richard and Jo Anna	Erin Taylor
Ben Sharafian	David Snitman	Strawbridge	Kathy Taylor
Candy Shaughnessy	Ken Snyder	Marla Stretz	Lonna Taylor
Michael Shayeson	Susan Snyder	John Stringer	Robert and Faye Taylor
Betsy Shea	Christopher Sobbecki	Clare Strohman	Team Daniel Running for
Alison Sheahan	Society of the Transfiguration	Elaine Stromme	Recovery from Mental Illness
Gerry Shear	Nikki Soich	Cynthia Stubits	Jane Teasley
Shear Family Foundation, Inc.	Cary Soileau	Jan Stull	Herb and Dayna Telidetzki
Edward and Rita Sheehan	Peter Solderitsch	Tim and Martha Stutzman	Anthony and Donna Telliard
Nichole Shelby	Daniel Sommers	Rhonda Sucharda	Linda Templin
Tina Shepard	Salli Song	Bettie Sullivan	Cecil and Joyce Tennant
Ben Shepherd	Lawrence Sorkin	David and Catherine Sullivan	Roger and Robbie Terkuile
Jonathan Sherman	Michael Sosidka	Theresa Sullivan	Richard Terrazano
Mary Sherman	William Soskin	Kimberly Summa	Ilona Teufel
Thomas Shimmel	Terrence Soule	Janice Summers	Christopher Thacker
Marion Shipley	David Spade	Mary Summers	Janice Tharpe
Wesley and Jeanne Shirk	Brad and Monica Spencer	Madelaine Surette	James and Karen Thier
Alexandra Shiva	Dan Spiner	Frank and Diane Surma	Theodore Cross Family
Shomi Shodhan	Maya Spivak	Susan E. Fisher	Charitable Foundation
Richard and Joyce Shortt	Spring Family Trust	Revocable Trust	Omer and Maxine Thibodeau
Shouvlín Foundation	Springsvalley	Susan G. and James A.	Jean Thiel
Carolee Shudnow	Nancy Sproule	Hubbard Charitable	Mary Thole
Ellen Shulman	David Stafford	Fund of the Greater	Chelsea Thomas
The Shulman Family Fund	Stance Healthcare Inc.	Milwaukee Foundation	John Thomas
Stacey Joan Shuster-Lefkowitz	Richard and Jan Stanco	The Susan Isabel Foundation	Alethia Thompson
Paula Siegel	Stanley Shalom Zielony	Myron and Janet Susin	Andrew Thompson
Ruth Siegel	Foundation	Sutherland Packaging, Inc.	Joshua Thompson
Anne Siemer	Mary Ann Stanovik	John and Margaret Sutton	Patrisha Thomson
Michael and Samantha Signor	Gary Stark	Robert and Joanne Sutton	Carlene Thorrington
The Sikand Foundation, Inc	Stark Community Foundation	John Sutton	Ruth Anne Thran
Eileen Silber	The Stateside Foundation	Owen and Betty Sutton	Matthew Tidd
Tim Silvius	Cindy Stavitsky	Robert Sutton	Tides Foundation
Brian Simnick	Chris Stegner	Stephen Swan	Martin Tierney
Peter and Catherine Simon	Laura Stein	Barb Swann	Eugene and Bonnie Tillman
Simplynessa15 and Family	Carol Stella	Thomas Swann	The Timothy Curt and Dona
Rosario Simpson	David and Mary Hershberger	Amy Swanson	Bissonnette Charitable Fund
Dani Singer	John and Valerie Stelling	Lora Swanson	Shirley Ting



Joanne Tishka	Elizabeth Visceglia	Yolanda Weisenberger	Diana Wortham
David Tjaden	Nancy Vitale	Ellen Weiser	William Wortmann
Peter Toal	Patricia and Lou Vlasho	Donna Weispfenning	Brett Wright
Michele Tobenkin	Diana Vo	Christine Weisser	Robert Wright
Tom & Carolyn Hamilton Family Foundation	Herbert and Phyllis Vogel	Lawrence Weissshahn	Shauna Wright
Cyndy Tomaino	Ed Volke	Carol Weissman	Venkat Yamani
Tomeo Family Charitable Fund	James Vyse	Richard Weissman	Yarbrough Family Foundation
Tone2day	Kari Wahlgren	Weissman Family Trust	Richard Yasko
Adrian Tonge	Sharna Wahlgren	Bonnie Welch	Jennifer Yehl
Andreya Tornes	Eileen Waidelich	Linden Welch	Chainllie Young
Todd and Shelly Torset	Erin Wain	David Wells	Clarence Young
Anna Toth	The Waits Brennan Foundation	Val Welman	Elizabeth Young
Jo Anne Towne	Amory Wakefield	Tanya Wendling	Richard and Lillian Young
Emily Tracy	Anne Waldron	Thomas Wenke	Jay and Laura Yudof
Cathy Trageser	John Walker	John Wenner	Daisy Yuhas
John Trautwein	Johnny Walker	Susanne Wessel	Alison Zaeder
Edward Travis	Kelly Walker	Hilda Westervelt	Jessica Zaklad
Daniel and Gloria Tremblay	Margaret Wall	Mary Westmoreland-Smith	Corey Zander
Tremont Street Foundation	Janet Wallace	Heather Whalen	Gloria Zappia
Warren and Patricia Trepeta	Susan Wallace	Anna Wheeler	Gary Zebrowski
Mark and Margaret Tritschler	John and Mary Waller	Beverly White	Barbara Zeidman
Aileen Trollinger	Charles and Jan Wally	Steven White	David and Diane Zell
Garry Trudeau	Judy Walsh	White Glove Workshops	Michael Zimmer
Barbara Trumbo	Linda Walsh	Carolyn White Lesieur	Ronald Zitting
Trust of Virginia M. Antunes	Michael P. Walsh	Craig Whitehead	Joseph Zolkowski
Mark Trutna	Lissa Walter	David Wicklund	Gary and Jeanee Zurek
Andrey Tsyaston	Richard Wampler	Harold Widom	Beverly Zwak
Darla Turlington	Riska Wanago	Theresa Wiegmann	Walter Zydlewski
Sara Turner	Lin and Robin Wang	Robert Wiese	
Daniel Tynan	Karen Ward	Mayra Wiessner	
UEDD Electric Company of Florida, Inc.	Lisa Ward	The Wilczynski Foundation	
The Ullmann Family Foundation	Barry and Carla Ware	Jamie Wiley	
Stephen Ulmer	Warner Media, LLC	Diana Wilker	
United Methodist Church of Libertyville	Patricia Warren	Susan Wilkof	
Linda Upson	Catherine Warthan	William and Gertrude Shelley Family Foundation	
Kathleen Utgoff	Gerald and Lilly Washington	The William H. Harris Foundation	
Maureen Valcour	Robin Wasserman	Abra Williams	
Valiance Partners, Inc.	Watchung Hills High School Senior Class	Jim Williams	
John Van Buskirk	WaterStone	Kathryn Williams	
Henry Van Der Laar	Deanna Watson	Karen Wilmer	
Slyvia Van Dusen	Kathy Watson	Howard Wilshire	
Barbara Van Ermen	Shelly Watson	Howard Wilshire	
Peter Van Ermen	John Watterson	Diana Wilson	
Matt Van Fossen	Jennifer Watts	Kenneth Wisian	
Robert Van Iten	Stefanie Wauk	John Wisner	
Megan Van Krieken	Andy and Angie Weas	Witt/Kieffer Inc.	
Valerie Van Ostran	Megan Weaver	Sally Wittler	
Joseph and Jane Vanable	Sarah Webb	Christine Wojdyla	
Sandeep Vasan	Pat Webster	Doug and Christine Wolf	
Edward Venter	James Weil	E. Judson Wolfe	
Neil and Dorine Verderber	Robert Weimer	William and Betty Wolfe	<i>Please excuse any inaccuracies or omissions.</i>
Inge Verweij	Anne Wein	Jim and Norma Wolford	
Taryn Vian	Linda Weinberg	Susan Wolston	
Alex Villa	Donald and Ilene Weiner	Beatrice Wood	<i>To submit corrections, please reach out to NAMI Donor Services at 888-999-NAMI (888-999-6264).</i>
Guadalupe Villanueva	Gwen Weiner	Charles and Marilyn Wood	
Deirdre Virgie	Jess Weiner	Heidi Wood	
	Kyle Weinstein	Ronald Woodyard	
	Linda Weis	Michael Workman	

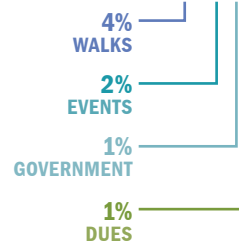
2018 FINANCIALS

2018 REVENUE \$27.4 M



-1% INVESTMENTS

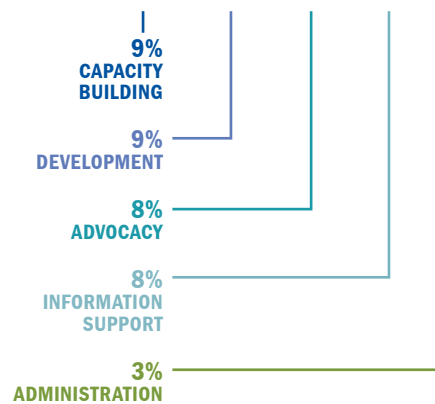
CONTRIBUTIONS	\$14,001,538
IN-KIND	\$11,296,708
WALKS	\$1,083,047
EVENTS	\$466,484
GOVERNMENT	\$406,598
DUES	\$362,140
INVESTMENTS	(\$324,460)



2018 EXPENSES \$26.8 M



PROGRAMS & MEMBERSHIP	\$16,882,944
CAPACITY BUILDING	\$2,498,314
DEVELOPMENT	\$2,293,552
ADVOCACY	\$2,222,128
INFORMATION SUPPORT	\$2,093,888
ADMINISTRATION	\$772,862



Help Us Shape the Future

NAMI relies on the generosity of thousands nationwide to keep our mission moving forward. To share your personal story, learn more about the mental health movement or make a tax-deductible gift to advance our work, reach out to us today.



National Alliance on Mental Illness

3803 N. Fairfax Drive, Suite 100
Arlington, VA 22203
703-524-7600

[Nami.org/Get-Involved/Donate](https://www.nami.org/Get-Involved/Donate)

-  [Facebook.com/NAMI](https://www.facebook.com/NAMI)
-  [@NAMICommunicate](https://twitter.com/NAMICommunicate)
-  [@namicommunicate](https://www.instagram.com/namicommunicate)
-  notalone.nami.org
-  ok2talk.org
-  [Youtube.com/NAMIvideo](https://www.youtube.com/NAMIvideo)

