

NAMI Convention | June 2019

# Practicing High Impact Philanthropy

Katherina M. Rosqueta

*Founding Executive Director, Center for High Impact Philanthropy  
Adjunct Faculty, Penn's School of Social Policy and Practice*

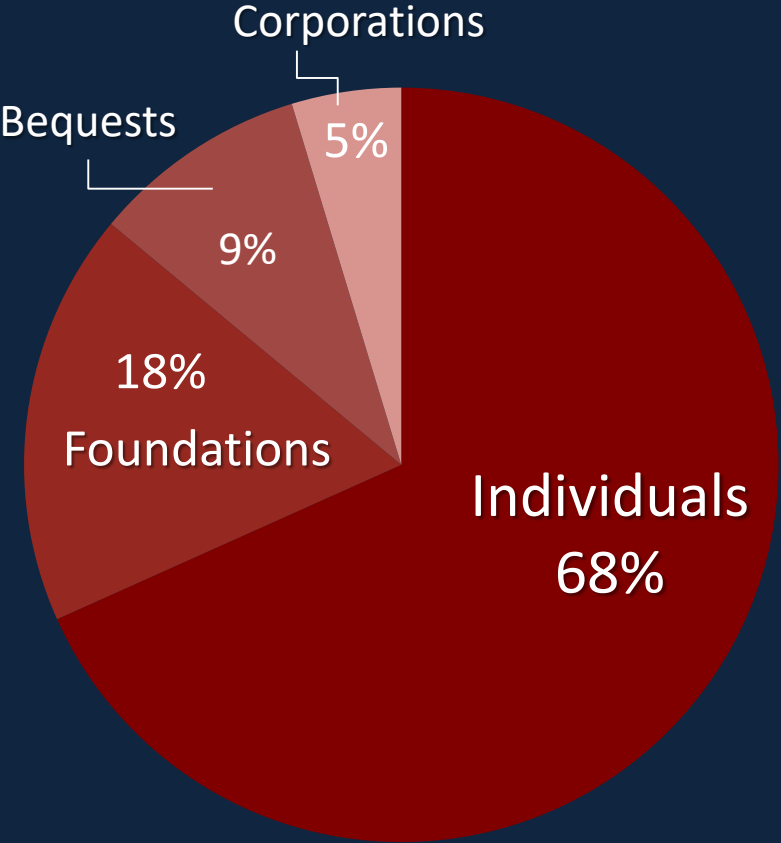
# The 'Million' Dollar Question

---

*How do I spend my money  
so it does the most good?*

# Individual Giving Dominates Philanthropy (US)

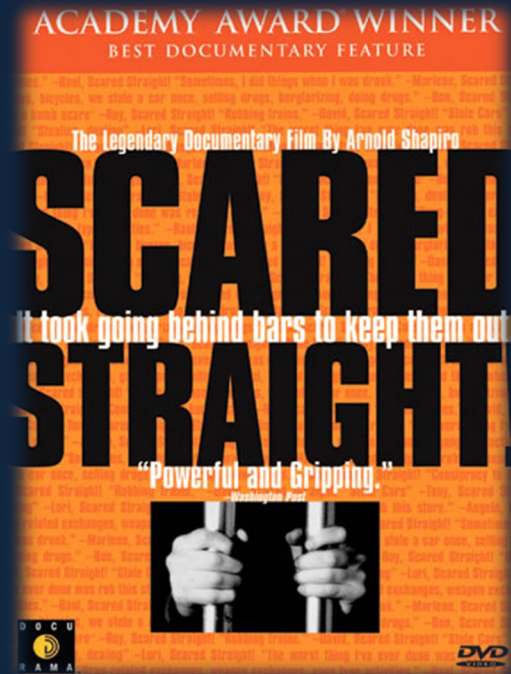
Total 2018 contributions:  
\$427.71 Billion



# Majority of US Households Give



# A Quick Quiz



# Understanding the Impact



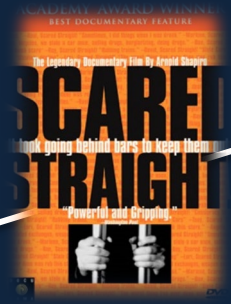
Home Visitation Program:  
**high impact**



Canned food drive:  
moderate positive impact



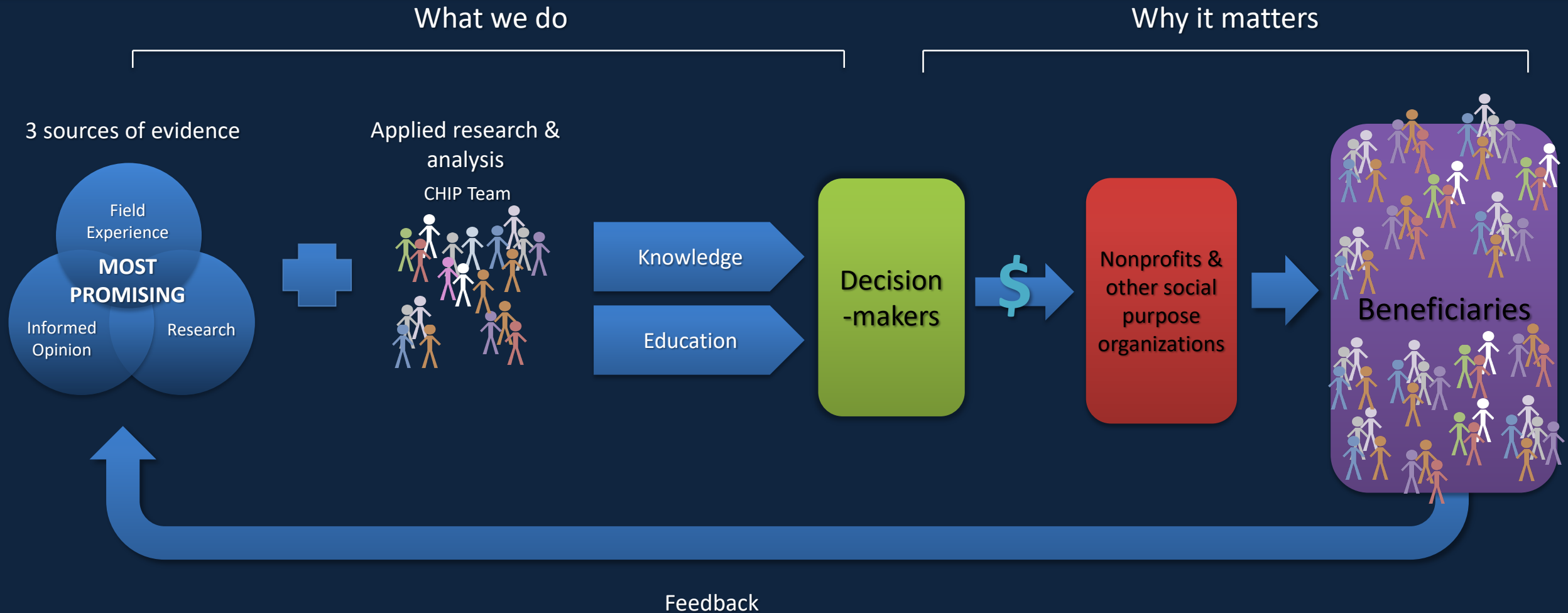
DARE education program:  
neutral effect in the long term



Scared Straight:  
negative impact



# Evidence-Based + Actionable



# Mental Illness & Substance Use Disorders: Our Work To-Date

*Lifting the Burden of Addiction: Philanthropic opportunities to address substance use disorders in the United States*

National Advisory Board

150 + academic articles (e.g., Lancet series, Disease Control Priorities, Surgeon General's report)

Data, reports & frameworks (e.g., SAMHSA, IHME, Foundation Center)

34 key informant interviews; workshops and focus groups with 36 participants



# 2 Broad Categories

**Use the full-range of existing tools**



**Enable radical transformation**



# Use what we know

## Use the full-range of existing tools



Help those most seriously affected

Provide tailored support to those at elevated risk

Intervene early, with a focus on youth

# Help those most seriously affected

## *Expand crisis response services*

Suicide Prevention Hotlines (e.g., National Suicide Prevention Hotline, Crisis Text Line)

Walk-in community health clinics and crisis response centers (e.g., Connections AZ)

Increase awareness of available services (e.g., Cuyahoga County, OH suicide prevention task force)

Overdose prevention and response (e.g., Prevention Point, Philadelphia)

# Help those most seriously affected

*Support parents, caregivers, and families in helping loved ones navigate crisis*

Consolidate information (e.g. SAMHSA's online directory, Kentucky Injury Prevention and Research Center's FindHelpNow.org) *and* make it more useful (e.g., Shatterproof Rating System for Addiction Treatment)

Training programs for family and friends of people with mental illness (e.g., Mental Health First Aid, NAMI's Family-to-Family education program)

# Help those most seriously affected

*Enable long-term stability*

Comprehensive support services (e.g., Clubhouses, Pathways to Housing)

Employment job training (e.g., Howie the Harp, UNC's Center for Excellent in Community Mental Health individual placement support)

# Use the full-range of what works

## Use the full-range of existing tools



Help those most seriously affected

**Provide tailored support to those at elevated risk**

Intervene early, with a focus on youth

# Provide tailored support to those at elevated risk

## *Populations:*

- Homeless
- People of color
- Low-income
- Veterans
- Incarcerated
- LGBTQ
- Refugees

## *Example Opportunities:*

For ***Hard to Reach Populations***: community outreach and connections to care (e.g., Project HOME, Refugee Services of Texas)

For ***Mothers Experiencing Addiction***: treatment programs that support needs during pregnancy, caring for children (e.g., Meta House)

For ***LGBTQ+ Youth***: tailored resources related to mental health and training for teachers and healthcare providers (e.g., Trevor Project Support Center & Lifeline)

# Use the full-range of what works

## Use the full-range of existing tools



Help those most seriously affected

Provide tailored support to those at elevated risk

**Intervene early, with a focus on youth**



# Intervene early with a focus on youth

*Support parents, caregivers, and families for increased stability*

High-quality home visitation programs for expecting parents (e.g., Nurse Family Partnerships)

Parenting skills and support (e.g., I Promise School, Oakland Promise )

# Intervene early with a focus on youth

*Support youth resiliency to behavioral health issues*

Comprehensive care for homeless children and youth (e.g., Covenant House)

Stable transition out of foster care (e.g., Walden Family Services, YVLifeSet)

Emotional preparedness for new college students (e.g., JED Foundation's Set to Go)

# Intervene early with a focus on youth

*Integrate early, frequent screening and connections to care for early intervention*

Increase school-based behavioral health services (e.g., Harlem Children's Zone, Long Island Council on Alcoholism and Drug Dependence pilot for coaches)

Increased capacity of pediatric providers (e.g., National Network of Child Psychiatry Access Programs)

# Use the full-range of what works

## Use the full-range of existing tools



Help those most seriously affected

Provide tailored support to those at elevated risk

Intervene early, with a focus on youth

Expand crisis response services

Support caregivers to help loved ones navigate

Enable long-term stability

For hard to reach populations

For women experiencing addiction

For LGBTQ+ youth

Support parents and families for increased stability

Build youth resilience and opportunity

Integrate early frequent screening and connections to care

# Transformation

*What if . . .*



Change the narrative

Policy reform

Better financing models

Research & innovation

# Q & A

**[www.impact.upenn.edu](http://www.impact.upenn.edu)**

Contact Kristen Ward, Social Impact Fellow,  
at [kwar@upenn.edu](mailto:kwar@upenn.edu) to learn more.

# Please take a few minutes to give us your feedback about this session

There are **two ways** you can give us your feedback:

1. Download the NAMI Convention App and rate the session in real time:

### App Download Instructions

Visit your App Store and search for the “Aventri Events” app. Download the app and enter Access Code: 778151 or scan the following QR Code:



2. You can also evaluate the session on your computer. Go to: [www.nami.org/sessioneval](http://www.nami.org/sessioneval), select the session and click “Rate This Session.”